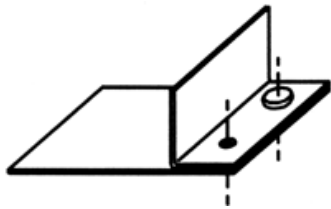
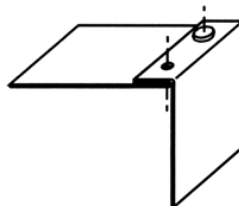


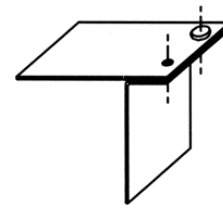
## Typische Clinchverbindungen



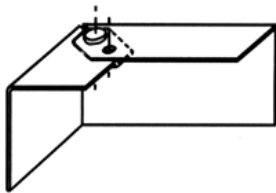
L-Schenkel mit Blechlage



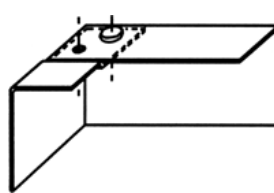
Blechlage innen  
mit L-Schenkel



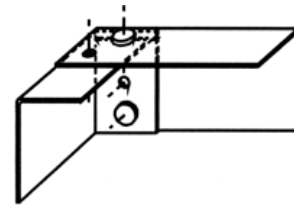
Blechlage außen  
mit L-Schenkel



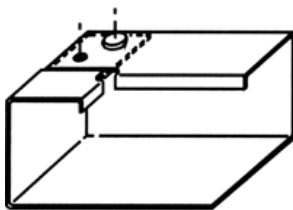
Eckverbindung diagonal  
mit Überlappung 1



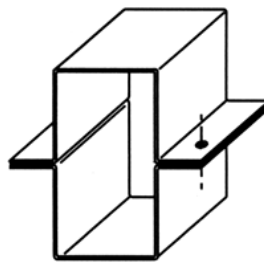
Eckverbindung diagonal  
mit Überlappung 2



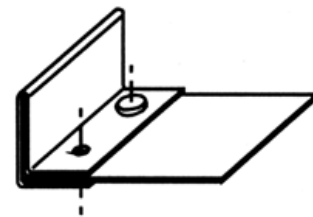
Eckverbindung diagonal  
mit Schenkelüberlappung



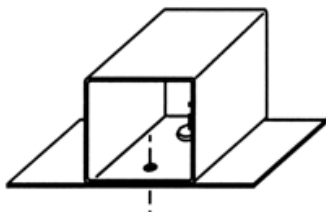
Eckverbindung diagonal  
mit Innenkantung



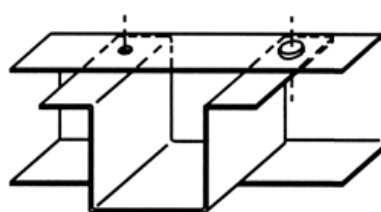
Doppelhutprofilverbindung



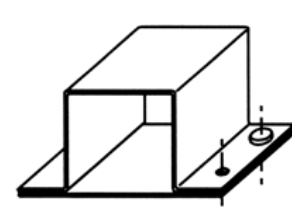
Sandwichverbindung mit  
innenliegender Blechlage



Viereckrohr mit Blechlage

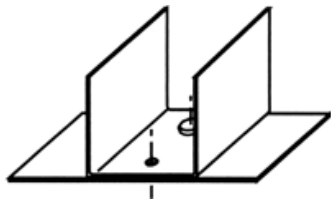


Hutprofil in U-Profil mit  
Flanschverbindungen

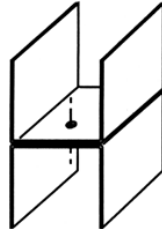


Hutprofil auf Blechlage  
Flanschverbindungen

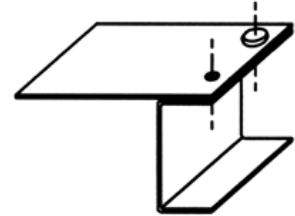
## Typische Clinchverbindungen (Seite 2)



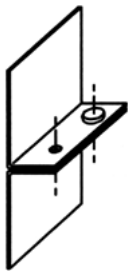
U-Profil auf Blechlage  
mit Stegverbindung



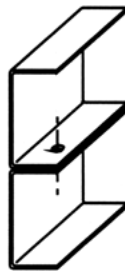
U-Profil mit U-Profil  
mit Stegverbindung



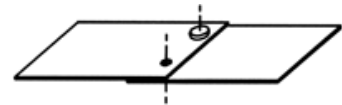
Blechlage mit U-Profil  
mit Stegverbindung



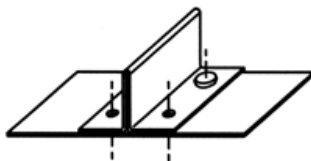
L-Profil mit L-Profil  
mit Flanschverbindung



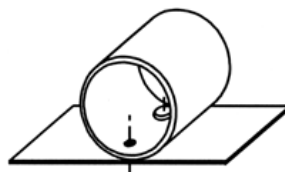
U-Profil mit U-Profil  
mit Flanschverbindung



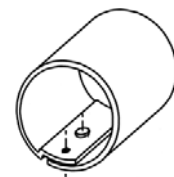
Überlappte Blechlage



T-Profil mit Blechlage  
mit Flanschverbindung



Rundrohr mit Blechlage



Überlappte Rundrohr-  
verbindung

Customer adress, Contact, Tel.-No.

---



### product / material specification

description of application : .....

Parts per month : ..... scheduled SOP: .....

---

Desired strength:                      sheer: ..... N,      peel: ..... N

Joint geometry: round ..... rectangular..... oval..... multi-joint.....

Joint size: **3,0 3,8 4,6 5,5 6,4 7,6** best possible: .....

Material **die side** (Code?): .....

thickness: ..... mm;      coating (type, thickness): .....

surface: dry ..... , oiled ..... , painted ..... , single side.....      Double sided .....

possibly middle layer: material ..... thickness ..... coating .....

Material **punch side** (Code?): .....

thickness: ..... mm;      coating (type, thickness): .....

surface: dry ..... , oiled ..... , painted ..... , single side.....      Double sided .....

additional Informationen / Sketches / drawing => please enclosure